

Reimagining UBC Forestry's

# Malcolm Knapp Research Forest

A hub for nature-based research and education



FORWARD 



THE UNIVERSITY  
OF BRITISH COLUMBIA

UBC Forestry

“*The generosity of donors can help realize our dream to reimagine the entire entrance area of the Malcolm Knapp Research Forest, including establishing a Welcome & Education Centre, Outdoor Learning Lab and accommodation for researchers and visiting scholars.*”

– *Hélène Marcoux,  
Manager, Malcolm Knapp Research Forest*

Case for Support

# A nature-based classroom

Our ability to connect with the outdoors reminds us of its beauty as well as our responsibility to protect it for the sake of our collective future and that of the many other lifeforms on the planet. At Malcolm Knapp Research Forest (MKRF), nature is all around you. Stepping into the forest and wandering through its many walking and hiking paths, you can gaze up at towering trees and hear the calls of native woodpeckers, owls, eagles and hawks. The children's programs that take place at MKRF's forest classroom introduce younger generations to the natural sciences, encouraging them to dream big and consider their role as future forest stewards. They, and the many other guests who visit the forest each year, are also surrounded by ongoing research underway within this outdoor laboratory.

MKRF is bordered by Golden Ears Provincial Park near Maple Ridge, BC — about an hour drive from Vancouver. Spanning over 5,000

hectares, this working forest encompasses the Loon Lake Lodge and Retreat Centre, along with an independently operated sawmill, harvesting operations and longitudinal research studies. Additionally, it is home to countless species of plants and animals, as well as access roads and trails for hiking and walking.

Operated by UBC Forestry on a self-funding model since 1949, the facility hosts field schools for undergraduate students and researchers that cover various aspects of forestry, conservation and land management. The ability to work and learn in the forest is vital for future forestry and land managers to gain hands-on experience. The research trials that take place here also play a vital role in informing public policy and best practices, which are needed now more than ever as we seek to ensure our forested ecosystems are managed sustainably well into the future.

»» 5,157

hectares of coastal forest (Coast Western Hemlock biogeoclimatic zone)

»» 1,100

research studies have taken place at MKRF. Some ongoing studies are among the most longstanding in North America

»» 40,000

visitors to MKRF annually with the potential to accommodate many more with the right facilities in place

»» 10,000

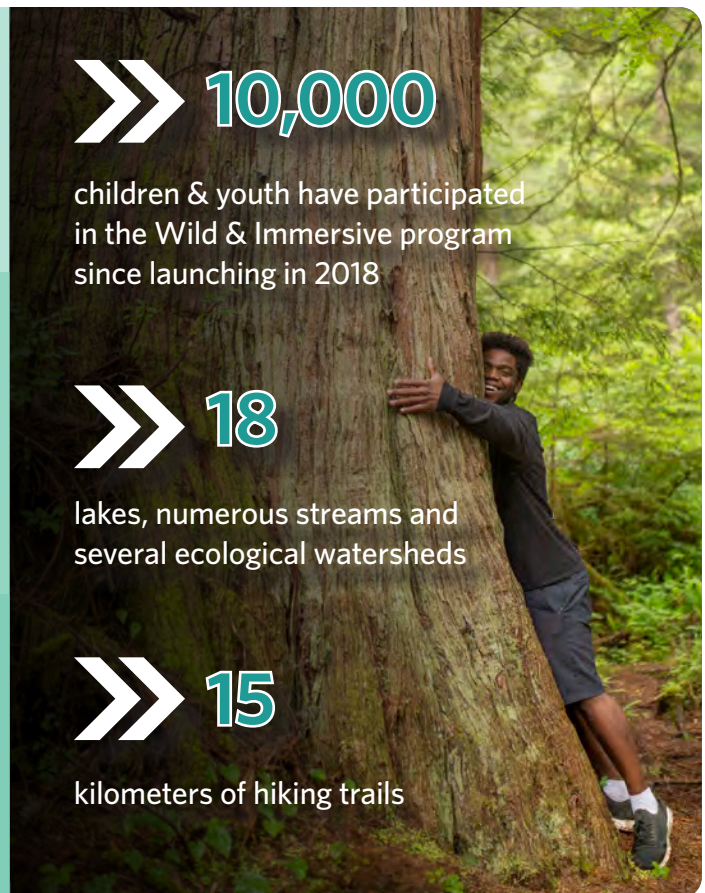
children & youth have participated in the Wild & Immersive program since launching in 2018

»» 18

lakes, numerous streams and several ecological watersheds

»» 15

kilometers of hiking trails





# Vision for the Malcolm Knapp Research Forest renewal project

MKRF is a unique resource for forestry research, education and community engagement. Our vision for new on-site facilities is to create a hub for engagement and knowledge mobilization, inspiring visitors and informing decision-making about the future of forest and ecosystem management.

## Collaborating with community

MKRF has well-established relationships with local communities built on shared priorities and values. The forest is situated on the traditional, ancestral and unceded territories of the *q̓icəy̓* (Katzie) people. MKRF has long been managed to recognize Katzie values and traditions, and is available for traditional, cultural and ceremonial purposes. In turn, Katzie community members help teach MKRF students about their culture, and both parties desire increased collaboration in the future. Local organizations and school districts often collaborate and partner with MKRF to offer unique learning opportunities and experiences. For example, MKRF hosts school district 42's highly sought-after Environmental School for students, as well as the year-round Wild & Immersive outdoor educational programming for children and youth, which has welcomed over 10,000 participants since being launched in 2018. Conferences, seminars and other events are hosted at the much-beloved Loon Lake Lodge and Retreat Centre — an all-season meeting, conference and retreat destination located 6.5 km from the main entrance to the forest. From its earliest beginnings in 1949 to today, the forest has also welcomed UBC Forestry faculty and students, along with researchers visiting from other academic institutions, forest industry professionals and collaborators from the BC Ministry of Forests.

## Why now?

The former 'Gatehouse' building that the Welcome & Education Centre replaces was completed in the mid-1960s. Without a clearly defined main entrance facility, people visiting the forest have often wandered through the MKRF grounds, walking along access roads used by heavy machinery and trucks needed for forest operations. The space was originally not intended as a public facility, but as modest office space for a skeletal UBC staff that would manage the site. While the neighbouring community of Maple Ridge is now just beyond the gates of the forest, MKRF is still without access to municipal services, such as potable water. Through this project, a major investment to bring utilities to the forest will be undertaken, ensuring clean and safe drinking water and higher sanitary standards for all that visit this wilderness at the edge of BC's densely populated Lower Mainland.



Through the eyes of the next generation, we are planting seeds that will shape the world of tomorrow.

# Welcome and Education Centre

New and expanded facilities are needed at the entrance to MKRF in place of aging infrastructure and in response to growing demand for the research forest's exceptional educational, research and public outreach opportunities. The centrepiece of the MKRF renewal project will be the Welcome & Education Centre — a 10,000-square-foot space with modern, post-and-beam design. Road realignment will ensure school groups and guests don't intersect with logging trucks and heavy equipment in this working forest. The entrance and foyer to the facility will also intuitively guide visitors through the facilities to MKRF programming, wilderness walks, forest events, an interactive exhibit space on forestry, classroom space, rental space, interpretive signage and meeting space.

The new Welcome & Education Centre combines a highly functional design and layout with better on-site equipment and research archival spaces, as well as expanded staff, student intern and researcher offices and meeting rooms. With a goal to encourage public engagement and patronage, the Welcome & Education Centre will also feature a functional, accessible and rentable 70-person multipurpose event/classroom space and industrial kitchen.

As a self-financing operation, it is vital to optimize business opportunities that align with community needs. A versatile, outdoor covered deck area can accommodate various programs and community events throughout the year. Plus, accessible washrooms and covered areas will improve patron comfort and experiences at the forest, all of which will help support MKRF operations for years to come.

Funding goal: **\$7M**

## Facility features

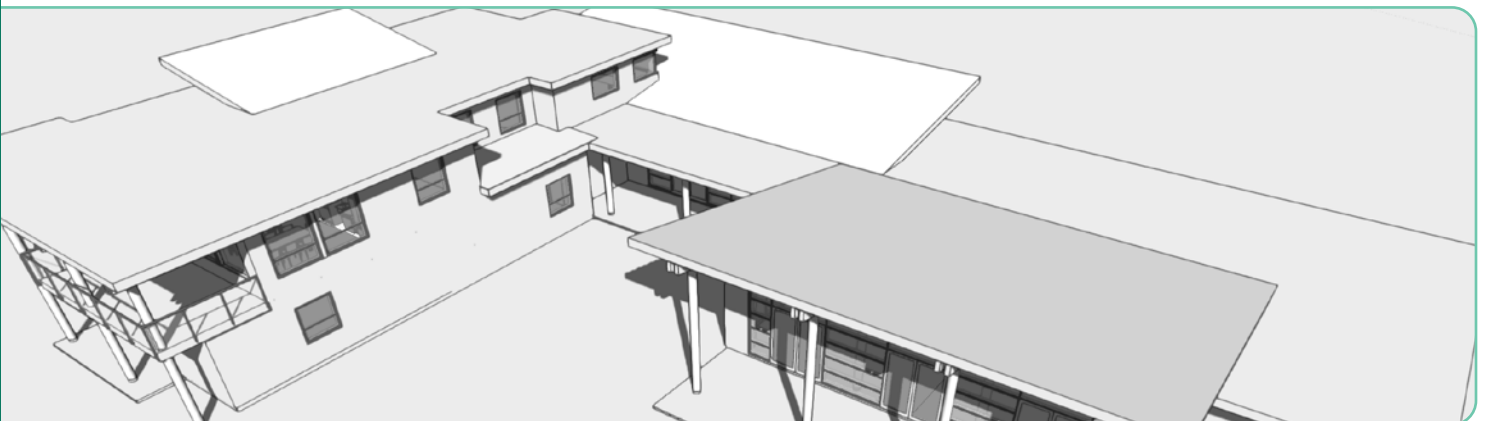
### » Public

- Information desk/atrium
- Interpretive/interactive exhibit
- Multipurpose event/classroom with kitchen
- Outdoor covered areas

### » Operations

- Offices
- Meeting spaces, including a boardroom
- Research Archive

*"We can accomplish so much more with facilities built with enhanced safety, sustainability and functionality in mind." — UBC Forestry Dean, Prof. Rob Kozak*



# Outdoor Learning Lab

This facility will extend educational and public outreach opportunities at MKRF with an indoor flex classroom area, outdoor teaching area, wood shop and open office space area. The Outdoor Learning Lab will feature a much-needed fire response hub in case of wildfire, along with storage and maintenance space for the property.

The shop yard it replaces has surpassed its usefulness lifespan and is in need of relocation on the MKRF property. Small in size and crumbling to the ground in some areas, the essential services it provides are in need of a new home that will also enable expanded offerings for community members and forestry research. In particular, the new space will include an indoor industrial classroom and outdoor teaching area that can be accessed by community groups, such as the Wild & Immersive program for school-aged children and youth. Currently, Wild & Immersive has access to only one warming hut and — through recent donor support — a newly constructed washroom. However, the program's strength is its ability to immerse participants as young as three years of age in the outdoors, year-round. Located in close proximity to the current Wild & Immersive basecamp, the Outdoor Learning Lab facility will be there to offer respite during times of extreme hot or cold.

Funding goal: **\$3M**

# Marc House

UBC Forestry faculty members and researchers from other institutions visit MKRF on a regular basis to conduct leading forestry research. The opportunity to conduct hands-on field work is invaluable to the study of forestry and its evolution. In MKRF's forest laboratory, researchers can observe complex ecosystem interactions that can lead to discoveries and innovations. On-site accommodations make it possible for researchers to focus their attention on data collection and producing results, rather than fighting traffic commuting to and from MKRF.



Ask us to learn more about the historic Marc House.

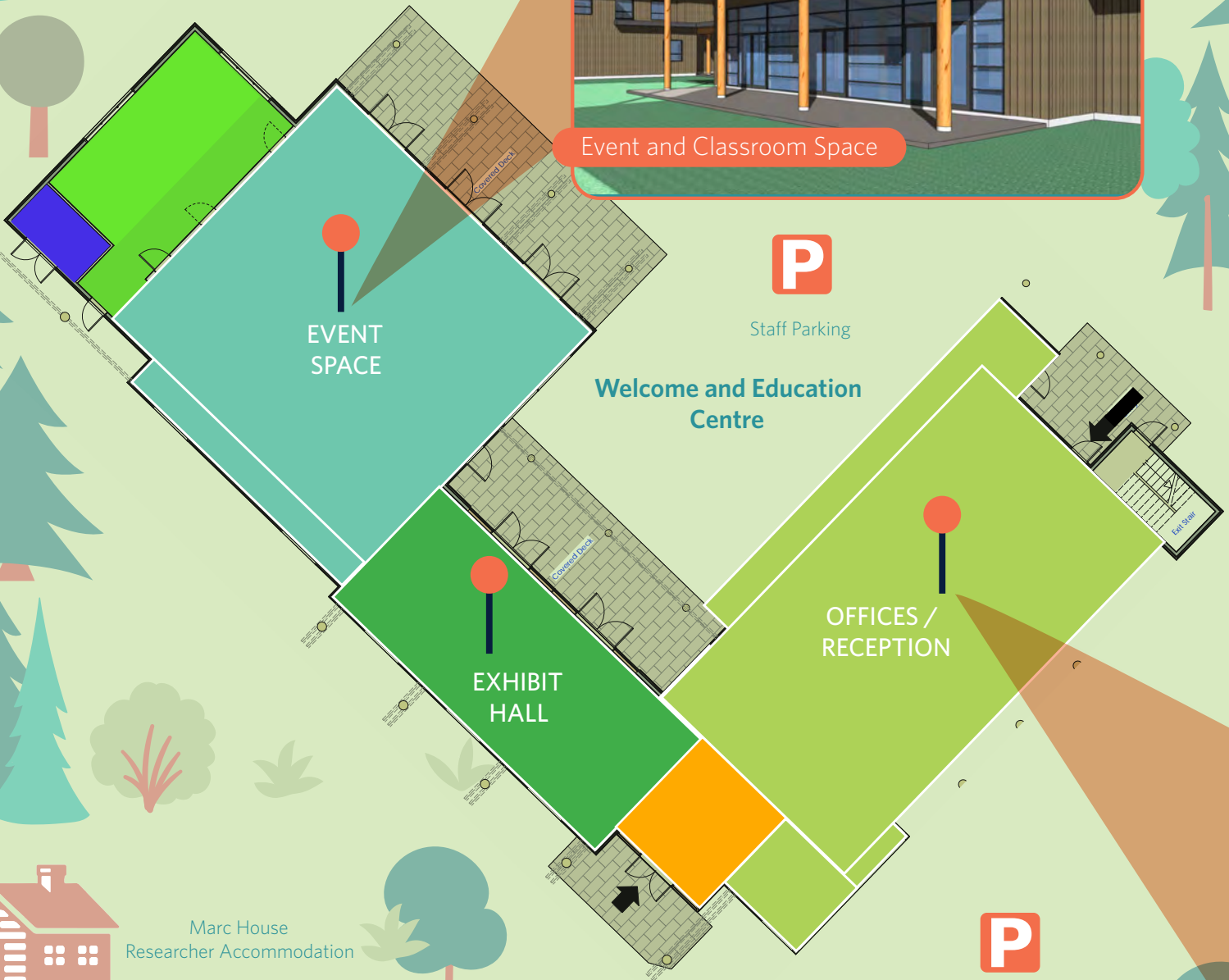
Funding goal: **\$750K**



# MKRF Renewal Project Site Plan



Event and Classroom Space



EVENT SPACE

EXHIBIT HALL



Staff Parking

Welcome and Education Centre

OFFICES / RECEPTION



Parking Lot with Bus Turnaround, Capacity for 50+ Vehicles

Marc House Researcher Accommodation

← Maple Ridge

WILD & IMMERSIVE  
BASE CAMP



TOOL STORAGE +  
VEHICLE BAYS



FIRE EQUIPMENT +  
WOOD SHOP



INDOOR FLEX  
CLASS ROOM



OPEN  
OFFICES

OUTDOOR  
TEACHING



Outdoor Learning Lab

Loon Lake



Reception/Office Space



North Alouette River



**With your help, we can make this vision a reality**

Your support of the MKRF renewal project will help create a destination for families and the general public to experience an education-based working forest. This project will enhance and grow community engagement in forestry and forests. It will provide facilities and increase access to outdoor educational opportunities for all ages, including to the Wild & Immersive outdoor program for children and youth. It will support world-class research investigations in forestry, land management and allied sciences. Gifts to this project will also deepen community connections to nature, helping to instill the value of forests for generations to come.

Forests and forestry are part of the solution to many of today's global challenges. Join us to help create a hub for sustainable solutions for our planet.

This project offers many ways to get involved, including naming and recognition opportunities. Please reach out to learn more.

To find out more, please contact:

**Emma Tully**

Assistant Dean, Development, Alumni and External Relations  
Faculty of Forestry | Office: 604-822-8716 | [emma.tully@ubc.ca](mailto:emma.tully@ubc.ca)

**Anna Horváth, MA**

Associate Director, Development  
Faculty of Forestry | Office: 604-827-2314 | [anna.horvath@ubc.ca](mailto:anna.horvath@ubc.ca)

**Hélène Marcoux, RPF, MSc**

Manager | Malcolm Knapp Research Forest  
Faculty of Forestry | Office: 604-463-8148 | [helene.marcoux@ubc.ca](mailto:helene.marcoux@ubc.ca)